



Loulé

448,000 €

Ref: SVP2059A

Beautiful 2 bedroom, 2 bathroom traditional cottage set in a peaceful country setting on a private plot, just minutes from a golf course.



114sm



2389sm



2



2



YES

Beautiful country cottage, set in tranquil countryside with lovely views and minutes to a local golf course.

Approach the cottage via a private driveway with ample parking spaces and a carport.

Entrance via the covered terrace ideal for outdoor sitting and dining on those warm sunny days from where you can admire the country views. From here you will step into a cosy sitting room with fireplace, fitted kitchen with breakfast area. From the living room there is access to the two bedrooms 1 of which is en-suite, there is an additional family bathroom. Cane and beam ceilings are featured throughout this cosy home.

Outside, a private, spacious pool terrace, ideal for sunbathing surrounds the pool. From the covered terrace you have views over the stone walled terraces of olive, carob and oak trees towards the countryside.

This property is in an idyllic private setting and is perfect for year round living or as a holiday home. Just a short 5 minute drive to a local golf course and nearby village and 10 minutes from the busy market town of Loulé.

A lovely, well maintained character home. Viewing is a must!

DIVINE HOME[®]

IMOBILIÁRIA • REAL ESTATE



General details

- Year of construction: 2004
- Type: Detached
- View: Countryside views
- Pool: Private pool
- Parking: Private parking space
- Outside area: Private garden
- Water: Borehole
- Sewerage: Septic tank

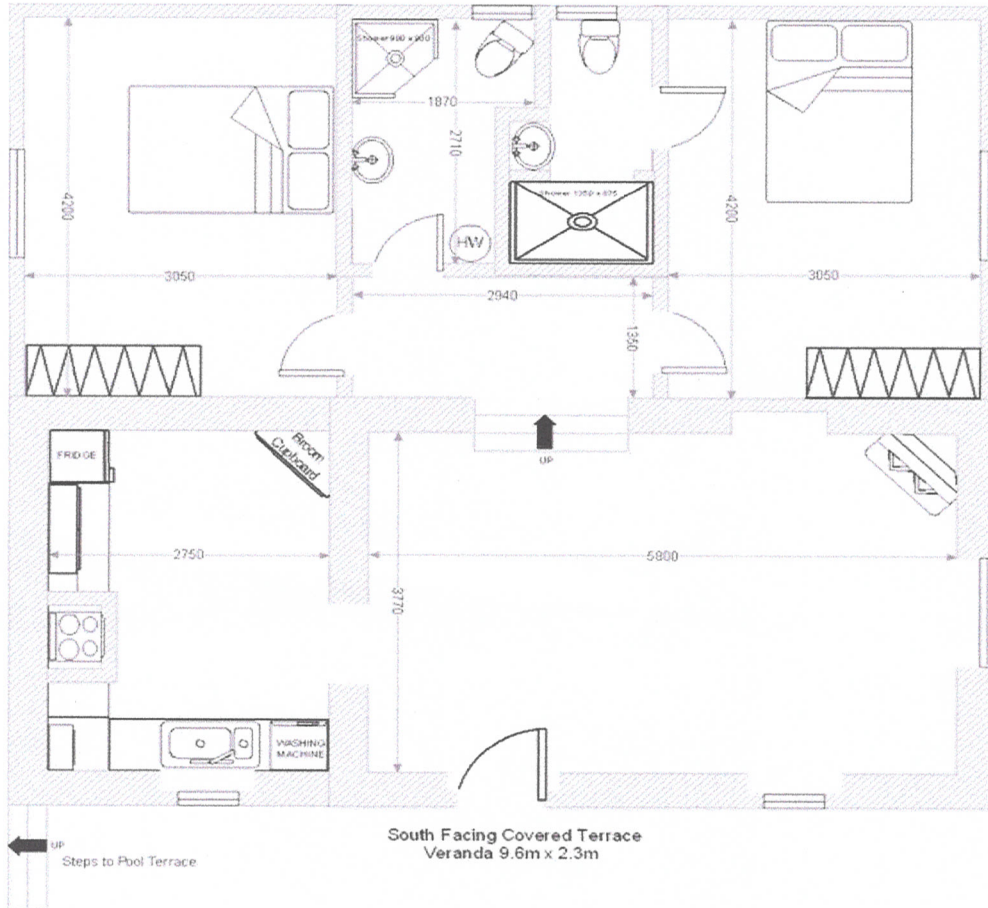
Interior details

- Heating : Airconditioning (heating + cooling) , Fireplace
- Insulation: Double glazing
- Energy certificate: B-

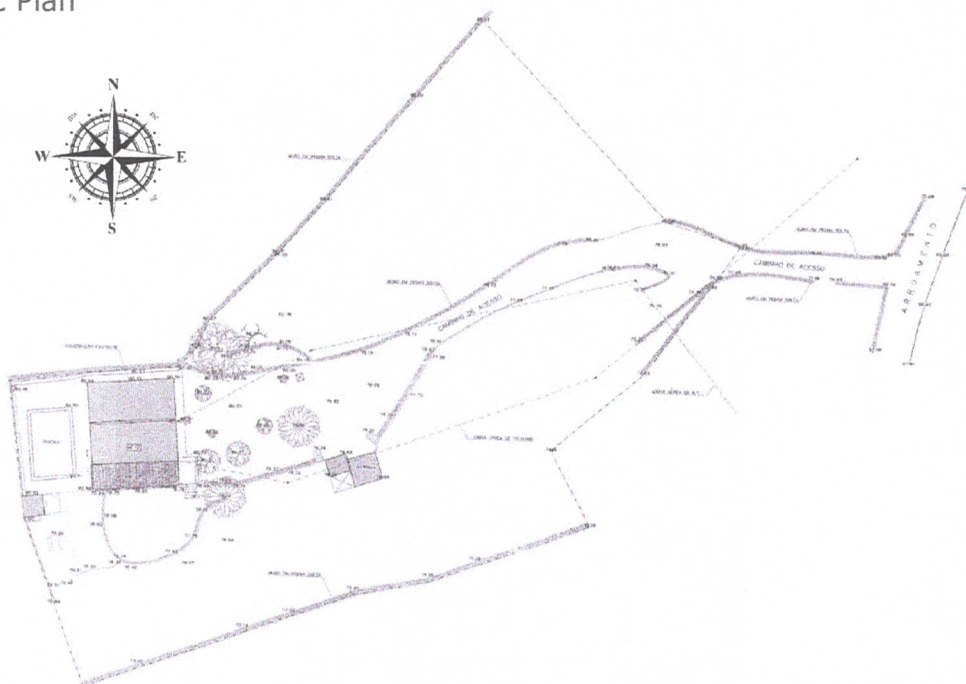
Exterior details

- Pool: Chlorine, Private
- Pool size: 8x5m
- Outside area: Private garden, Terrace / balcony
- Parking: Carport
- View: Countryside views
- Sewerage: Septic tank
- Water: Borehole
- Golf course: 5 min. by car
- Supermarket: 5 min. by car
- Restaurant: 5 min. by car
- Health centre: 15 min. by car
- Airport: 30KM

Floor Plan – please note all measurements and dimensions are approximate and metric



Topographic Plan



LEVANTAMENTO TOPOGRAFICO
E LIMITE DO TERRENO

BRUNO
1997

[Signature]